

Current CNCC Foundation Board Members

- Ann Brady (President)
- Dr. Stephen Swymer (Vice President)
 - Diane Sizemore (Secretary)
 - Sam Tolley (Treasurer)
 - Peggy Rector
 - Terry Carwile
 - Karol Bullen
 - Larry "Bud" Striegel
 - Tim Webber
 - JoAnn Baxter
 - Rachel Gates
 - Anthony Mazzola



Annual Report 2018



Did you know your purchases can make a difference? AmazonSmile donates to Colorado Northwestern Community College Foundation when you do your shopping at smile.amazon.com/ch/84-0842160.





CNCC MISSION

To enhance people's lives by providing an accessible, affordable, quality education.



VISION:

Colorado Northwestern Community College will be the college of choice for students seeking a unique education grounded in the Colorado experience.

VALUE STATEMENT:

Innovative teaching, outreach education, and continual assessment will ensure that our students have the skills to further their education, succeed at meaningful careers, and prosper in a complex and increasingly diverse world.

CORE VALUES:

- Achievement
- Life-Long Learning
- Diversity
- Innovation
- Community Involvement and Development

Ways to Give

Online: Visit our secure giving link

http://weblink.donorperfect.com/Support_CNCC

By Mail: Make check payable to CNCC Foundation

500 Kennedy Drive, Rangely, CO 81648

As a bequest: "I give, devise and bequeath to the Colorado Northwestern Community College Foundation, a nonprofit corporation ("The Foundation") located at 500 Kennedy Drive, Rangely, CO 81648, the following assets: [specific assets, dollar amount, percentage, or residuary] to be used for [the purpose of your choice]." It's that easy!

For more information and additional giving opportunities, contact Sue Samaniego, CNCC Foundation Director, at 970.675.3216 or sue.samaniego@cnc.edu.

Every gift
makes a
difference!

All gifts to the CNCC Foundation are tax deductible according to IRS regulations.



Opportunities to double your impact!

Colorado Opportunity Scholarship Initiative (COSI)

The CNCC Foundation participates in several of the Colorado Department of Education's COSI programs. The Matching Student Scholarship (MSS) grant program doubles the impact of each donation to this scholarship fund by matching it dollar for dollar! To receive these scholarships, students must be Colorado residents, meet financial guidelines, have at least a

Foundation for Colorado Community Colleges MSS grant:

\$1 to \$1 match for scholarships for qualifying students from anywhere in Colorado.

Moffat and Rio Blanco Counties MSS grant:

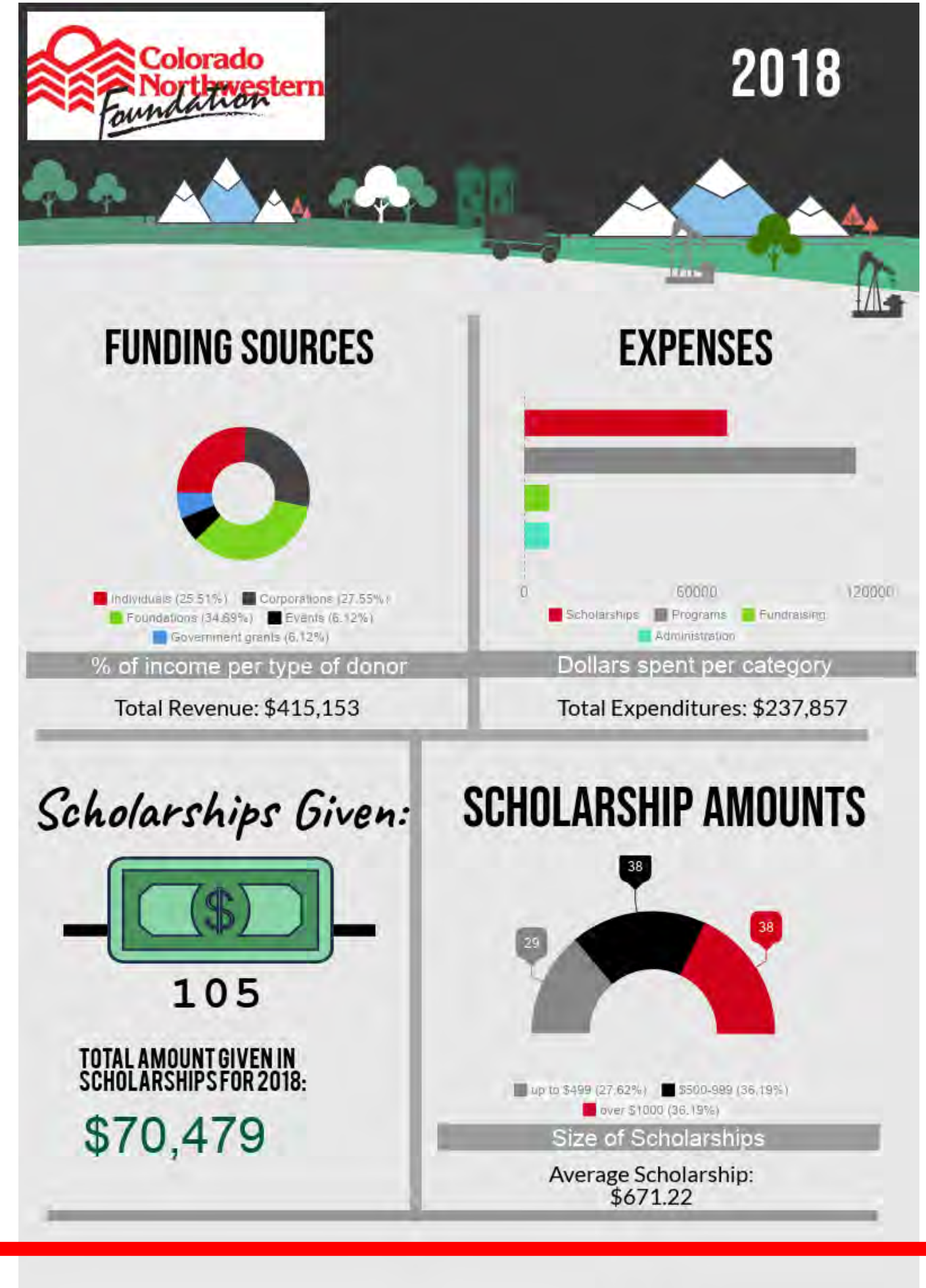
\$1 to \$1 match for scholarships for qualifying students from Moffat or Rio Blanco Counties.

Aviation Workforce Scholarships:

\$1 to \$1 match for scholarships for qualifying aviation students.

These scholarship programs will match over \$40,000 given by donors like you to this scholarship program over the next year. This will mean over \$80,000 in scholarships given to CNCC students just from this scholarship program!

In addition to the scholarships, the COSI program provides supports to the student scholars to ensure that they have the skills and assistance needed to successfully complete their programs. COSI is an all-around win!



CHANGING LIVES

By giving to the Colorado Northwestern Community College Foundation, you transform the life of a student, their family, and our community.



In 2018, your gifts enhanced the following areas:

- The Fund for CNCC: Unrestricted gifts support crucial services for our students that state funding cannot provide.
- Scholarships
- Special Project grants: Support new initiatives, capital projects and program enhancements.

2018 Financial Report

COLORADO NORTHWESTERN COMMUNITY COLLEGE FOUNDATION

STATEMENT OF FINANCIAL POSITION
December 31, 2018

	<u>2018</u>	<u>2017</u>
<u>ASSETS</u>		
CURRENT ASSETS		
Cash and cash equivalents	\$ 587,145	\$ 407,436
Accounts receivable	-	838
Unconditional promises to give	20,908	20,996
	<u>608,053</u>	<u>429,270</u>
TOTAL CURRENT ASSETS		
OTHER ASSETS		
Endowment investments:		
Western Colorado Community Foundation, Inc.	126,839	144,607
	<u>126,839</u>	<u>144,607</u>
TOTAL OTHER ASSETS		
	<u>\$ 734,892</u>	<u>\$ 573,877</u>
TOTAL ASSETS		
<u>LIABILITIES AND NET ASSETS</u>		
CURRENT LIABILITIES		
Accounts payables	\$ 220	\$ 16,501
	<u>220</u>	<u>16,501</u>
TOTAL CURRENT LIABILITIES/TOTAL LIABILITIES		
NET ASSETS		
Without donor restriction	61,585	62,951
With donor restrictions	673,087	494,425
	<u>734,672</u>	<u>557,376</u>
TOTAL NET ASSETS		
	<u>\$ 734,892</u>	<u>\$ 573,877</u>
TOTAL LIABILITIES AND NET ASSETS		